

KALDEWEI

Made in Germany

**2.3mm STEEL ENAMEL
15 YEAR GUARANTEE***



Kaldewei Eurowa Bath

Attractive, comfortable and versatile
Classic rectangle model with rolled headrest
Wide, flat base for showering or bathing
High quality porcelain on steel bath

EUROWA

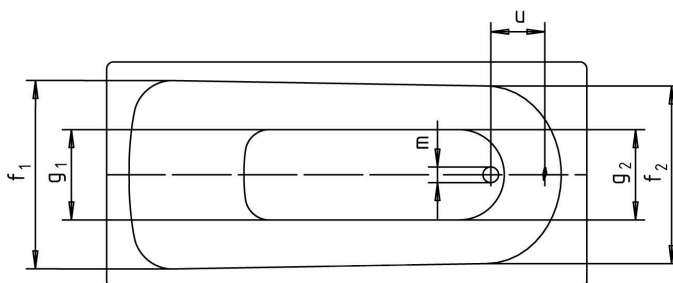
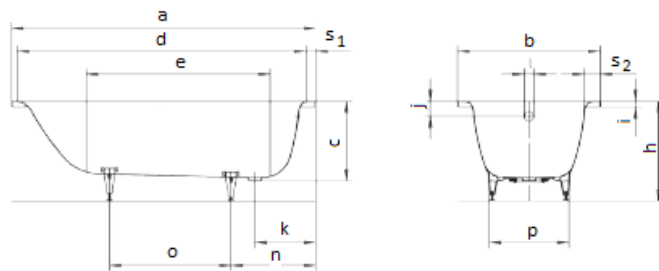
- Comfortable bathing or showering with waste at foot end
- Classic minimal design
- Made of Kaldewei steel enamel 2.3 mm gauge
- Quality product made in Germany
- **15 YEAR WARRANTY***

OPTIONS

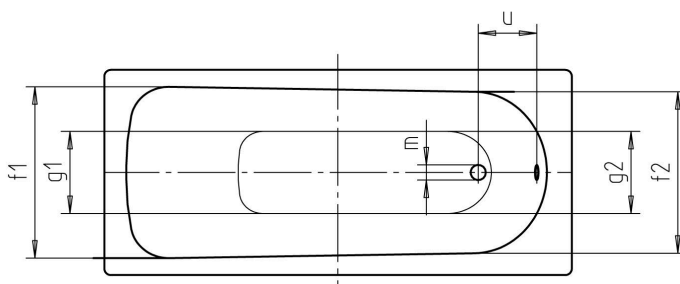
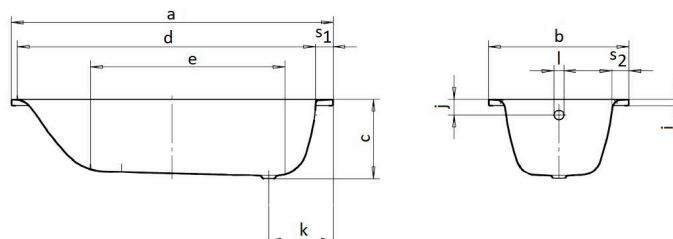
- Sound Insulation
- Tile Trim
- Leg System (model 271 excluded)
- Bathtub Cushion



MODELS 309 310 311 312



MODEL 271



Model No.		309	310	311	312	271
External length	a	1400	1500	1600	1700	1700
External width	b	700	700	700	700	750
Depth	c	390	390	390	390	390
Internal length (top)	d	1230	1330	1430	1530	1580
Internal length (bottom)	e	850	950	1050	1150	1150
Internal width (top)	f ₁ ; f ₂	550; 530	550; 530	550; 530	550; 530	630; 560
Internal width (bottom)	g ₁ ; g ₂	390; 350	390; 350	390; 350	390; 350	430; 380
Height with feet	h	515-535	515-535	515-535	515-535	N/A
Height of rim	i	32	32	32	32	32
Distance top edge to centre of overflow hole	j	63	63	63	63	70
Distance bath edge to centre of drain hole	k	310	320	310	310	290
Diameter of overflow hole	l	52	52	52	52	52
Diameter of drain hole	m	52	52	52	52	52
Distance between centre holes	u	212	222	212	212	226
Delivery		8 weeks	Stocked	8 weeks	Stocked	Stocked

* Terms & Conditions apply.