

## WDB 95 CONNECTING STRIP

WDB 95 connecting strips from Kaldewei protect silicone joints in baths and shower trays against moisture penetration. The strips are installed between the edge of the bath or tray and then tiled over. WDB 95 tray connecting strips prevent moisture penetrating the walls, should miniature cracks develop inbetween the joints. This makes your bathroom safer.

WDB 95 can be adapted to suit all situations and is available in 3.8 m and 5 m-length rolls.

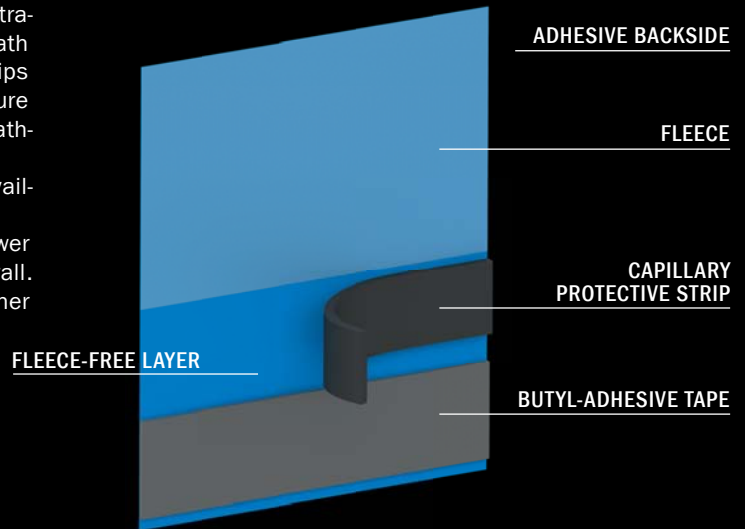
It is suitable for use with all Kaldewei baths and shower trays as a seal between the bath or shower tray and the wall. The strips can easily be secured and combined with other existing wall seals.

Delivery (per roll)

- 1 x 95 mm-width connecting strip (3.8 m/5 m)
- 1 x Capillary protective strip 15 x 2 mm
- 4 x Capillary protective corners
- 1 x Installation instructions
- 1 x Notice sticker for tilers

Order no. for WDB 95 – 3,8 m: 6876 7599 0000

Order no. for WDB 95 – 5 m: 6876 7600 0000



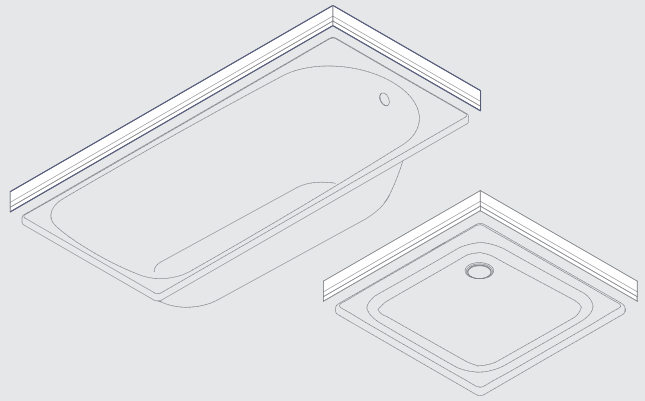
### TYPES OF INSTALLATION

Types of installation shower trays		
<b>1</b> wall-mounted longitudinally	<b>2</b> corner installation	<b>3</b> alcove installation

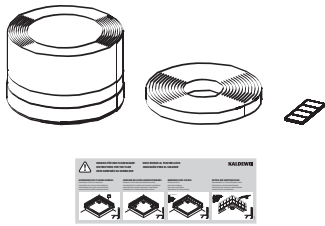
Types of installation bathtubs		
<b>1</b> wall-mounted longitudinally	<b>2</b> corner installation	<b>3</b> alcove installation

# STEP BY STEP TO SUCCESS

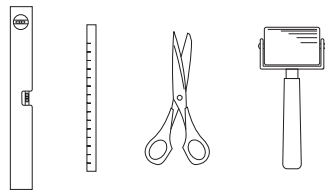
WDB 95 Connecting Strip.



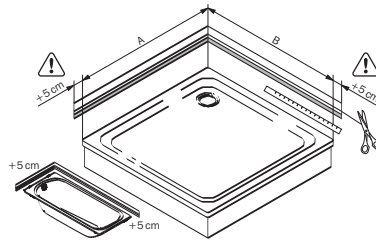
## 1 SCOPE OF SUPPLY



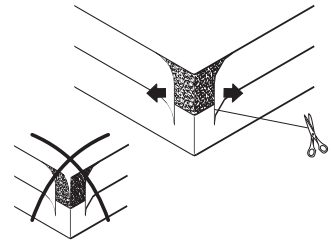
## 2 REQUIRED TOOLS



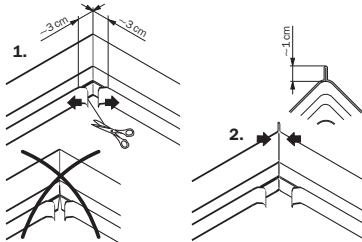
## 3 CUTTING THE SEALING STRIP TO SIZE



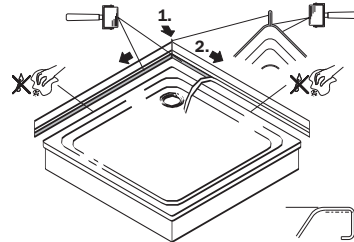
## 4 CUTTING THE PROTECTIVE SHEET (WALL SIDE)



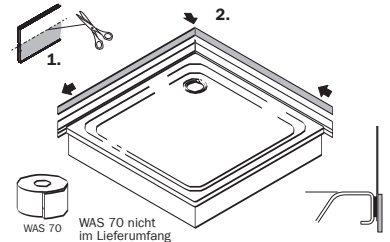
## 5 CUTTING OF THE PROTECTIVE SHEET (BATHTUB SIDE)



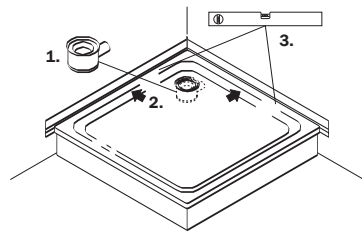
## 6 APPLYING THE SEALING STRIP



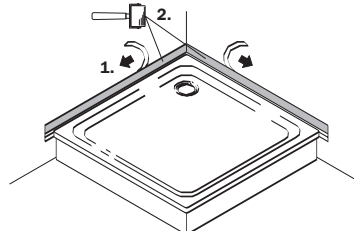
## 7 PLACING THE WAS 70 (OPTIONAL) IN POSITION



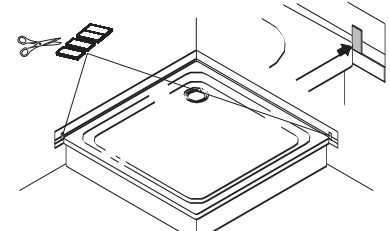
## 8 PLACING THE SHOWER TRAY/BATHTUB IN POSITION



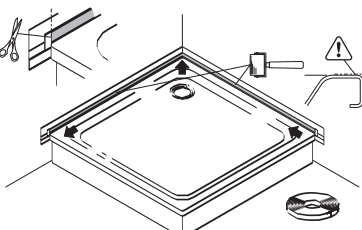
## 9 PRESSING THE SEALING STRIP INTO PLACE



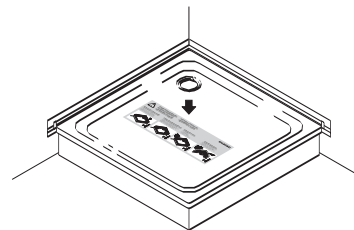
## 10 STICKING ON THE CAPILLARY PROTECTION CORNERS



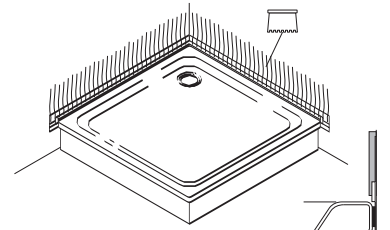
## 11 STICKING ON THE CAPILLARY PROTECTION STRIP



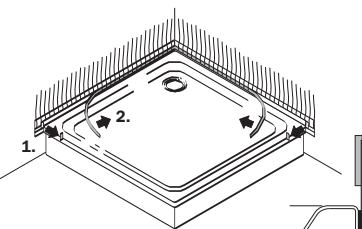
## 12 STICKING ON THE INFORMATION FOR THE TILER



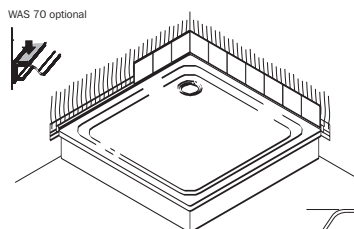
## 13 APPLICATION OF THE TILE ADHESIVE



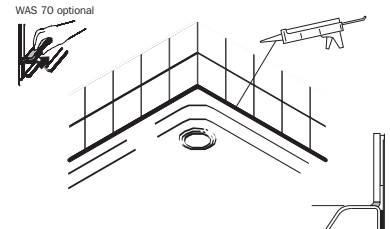
## 14 REMOVAL OF THE CAPILLARY PROTECTION STRIP



## 15 FITTING OF THE TILES



## 16 ARRANGEMENT OF THE MAINTENANCE JOINT



The complete assembly sequence with notes is described in the installation instructions.